

# Theory for drummers

## DRUM KIT NOTATION

Kick    Snare    HiHat    Tom1    Tom2    Tom3    Crash    Ride    Rim click    HiHat foot

\*Some composers use slightly different notation, but this is a good start!

## CLEFS

**Treble clef**      **Bass clef**      **Percussion clef**

(Xylophone)      (Timpani)      (Drum kit)

## NOTE VALUES

**Semibreve** and rest  
Whole note (4 counts)

**Minim** and rest  
Half note (2 counts)

**Crotchets** and rests  
Quarter note (1 count)

**Quavers** and rests  
Eighth note (1/2 count)

**Semiquavers** and rests  
Sixteenth note (1/4 count)

## TIME SIGNATURES

- 2** Top number = how many counts  
**4** Bottom number = what type of count

Four crotchet counts per bar

Three crotchet counts per bar

Six quaver counts per bar

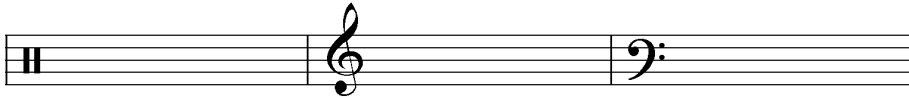
## DYNAMIC MARKINGS

- pp* - pianissimo (very soft)  
*p* - piano (soft)  
*mp* - mezzo piano (moderately soft)  
*mf* - mezzo forte (moderately loud)  
*f* - forte (loud)  
*ff* - fortissimo (very loud)

**Accent** (louder note)

- Crescendo**      **Decrescendo**  
(gradually get louder / softer)
-

Name and draw 2 more of each clef:




 This is a group of two . Draw a single one here

Is a 'whole note' a *semibreve* or a *semiquaver*?

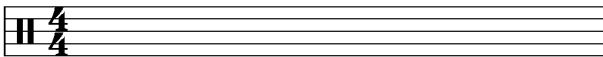
How many *crotchets* fit in the same space as a *minim*?

Circle the four *semiquavers* -  or 

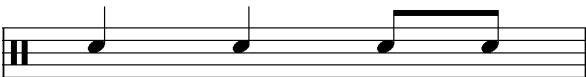
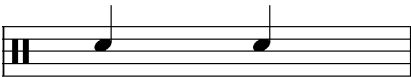
Draw the following: Quaver rest Crotchet rest

Is this a *minim* or a *semibreve* rest? 

Write a *minim*, a *crotchet* and two *quavers* in the snare space on the bar below:



Write the correct time signatures on the bars below:



Match the definitions with the dynamic markings: Write the volumes that these symbols indicate:

*mp*

loud

*mf* -

*f*

very soft

*p* -

*ff*

very loud

What is this called, and what does it mean?

*pp*

moderately soft

\_\_\_\_\_

# Tied and dotted notes

A tie lengthens the value of the first note by the value any notes it is tied to.

1 + 2 + 3 + 4 +    1 e + a 2 + 3 + 4 +    1 + 2 + 3 + 4 +

A dot lengthens a note (or rest) by half it's original value. The notes and rests in brackets are there just so that the bars add up.

1 2 3 4    1 2 3 4

1 + 2 + 3 + 4 +    1 + 2 + 3 + 4 +

Play through the following exercise containing tied and dotted notes:

1 + 2 + 3 + 4 +

A 'double dot' adds half plus a quarter of the note's original value!  
In this case: ♩ + ♩ + ♩

# Breakdown of 16th note groups

1 e + a      1 e + a      1 e + a

1 e + a      1 e + a      1 e + a

1 e + a      1 e + a      1 e + a

1 e + a      1 e + a

1 e + a      1 e + a      1 e + a

1 e + a      1 e + a      1 e + a

1 e + a      1 e + a      1 e + a

1 e + a      1 e + a      1 e + a

1 e + a      1 e + a      1 e + a

1 e + a      1 e + a

1 e + a      1 e + a

# Reading 'syncopated' notation

"On the beat" rhythm:

"Off the beat" rhythm:

Syncopated rhythm:

Notation with rests:

With tied notes:

Syncopated notation:

1

2

3

4

5

6

7